

TYPICAL MIN. DIMENSIONS			
PIPE DIA.	H (MIN)	W OR W1	$\Delta E$ (MIN)
18	4'-10"	3'-0"	3'-9"
24	5'-6"	3'-0"	4'-4"
30	6'-2"	3'-7"	5'-0"
36	6'-10"	4'-6"	5'-7"
42	7'-4"	5'-3"	5'-11"
48	8'-0"	6'-0"	6'-6"
54	8'-6"	6'-8"	7'-0"
60	9'-2"	7'-4"	7'-7"

$\Delta E$ =MINIMUM DIFFERENCE IN ELEVATION FROM PAVEMENT EDGE TO FLOW LINE OF OUTLET PIPE.

W OR W1 (MAX)	BOTTOM SLAB	
	MATERIALS	S
TO 4'-6"	NON-REINF. CONCRETE	6"
OVER 4'-6"	CONC. RINF. W1 #4 BARS 12" O.C. BOTH WAYS 2" CL. FROM SLAB TOP	8"

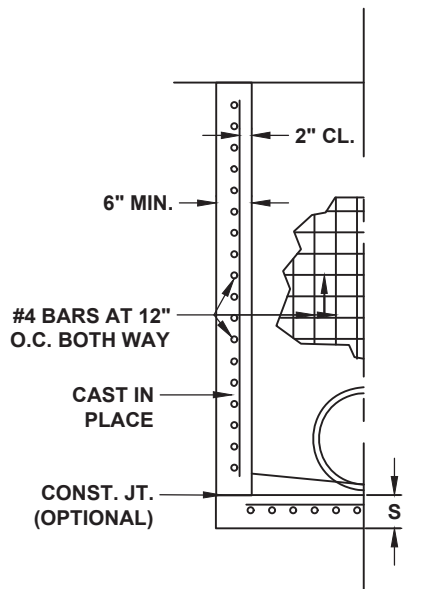
**NOTE:**

- THE MIN. H @ MIN. E GIVEN IN ABOVE TABLE ARE BASED UPON THE TYPICAL OUTSIDE DIMENSIONS OF CONCRETE PIPE AND MAY BE VARIED IF CONDITIONS PERMIT WITH VARIED DIMENSIONS SPECIFIED IN THE PLANS OR DIRECTED BY THE ENGINEER. W. @W. DIMENSIONS DO NOT HAVE TO BE EQUAL.
- ALL RISER SEAMS, PIPE SEAMS, AND OPENINGS SHALL BE SEALED WITH NON-SHRINK HYDRAULIC CEMENT.

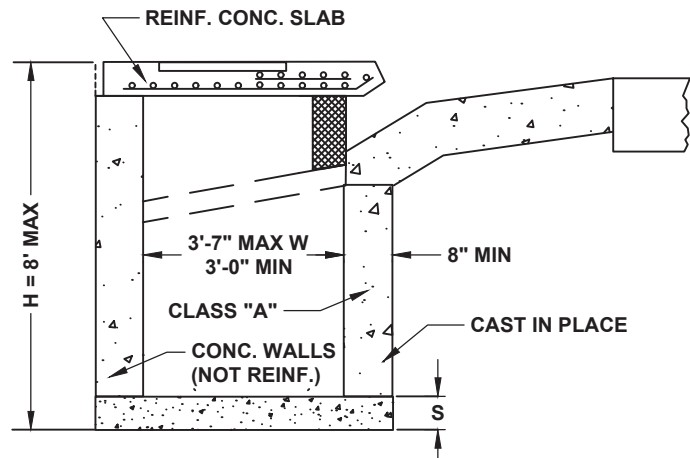
**CONSTRUCTION ALTERNATES**

**NOTE:**

SEE SEPARATE STANDARDS FOR PRECAST ALTERNATES.



**REINFORCED CONCRETE (HALF SECTION)**



**NON- REINFORCED SMALL BASIN (W. NOT OVER 3'-7")**

**NOTES:**

- THE USE OF BROKEN OR FRACTURED STRUCTURES IS PROHIBITED.
- ALL PIPE ENTERING STRUCTURES MUST BE DOUBLE GROUTED. (INSIDE AND OUT)



**CITY OF CUMMING**

DEPARTMENT OF UTILITIES

**CATCH BASIN  
CAST-IN-PLACE**

DETAIL NUMBER:

**SW-7C**

LATEST REVISION

03/17/2020

SCALE: NOT TO SCALE