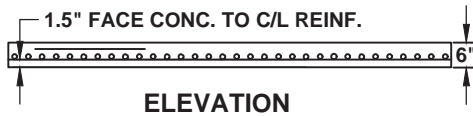
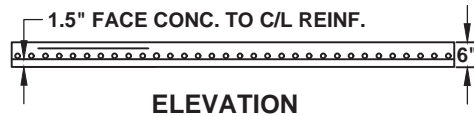


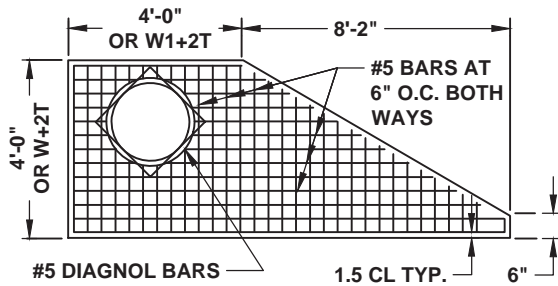
DETAIL OF TOP SLAB, REINF. STEEL AT CLEARANCES REQ'D.



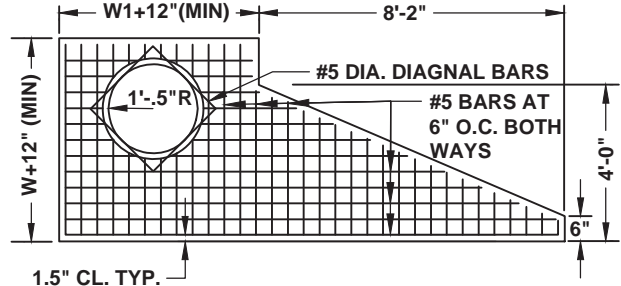
ELEVATION



ELEVATION



DETAIL OF TOP REINFORCED CONCRETE SLAB
PLAN VIEW



NOTE:

1. ALL CATCH BASINS WILL HAVE STEPS OR LADDER BARS, NUMBER A LOCATION TO BE AS DIRECTED BY THE ENGINEER.
2. ALL BARS IN PLAN VIEW ARE SPACED AT 6" O.C.
3. FOR PLAN DETAIL OF REINFORCING STEEL IN TOP PORTION OF SLAB SEE PART PLAN BELOW.
4. PIPE SIZES, NUMBER, ALIGNMENT, AND INVERT SHOWN ARE ILLUSTRATIVE, SEE PLANS FOR SPECIFICS.
5. INVERTS TO BE FORMED WITH GROUT OR CONCRETE AS DIRECTED BY THE ENGINEER OR AS SHOWN IN THE PLANS.



LATEST REVISION

03/17/2020

CITY OF CUMMING

DEPARTMENT OF UTILITIES

CATCH BASIN CAST-IN-PLACE

DETAIL NUMBER:

SW-7A

SCALE: NOT TO SCALE