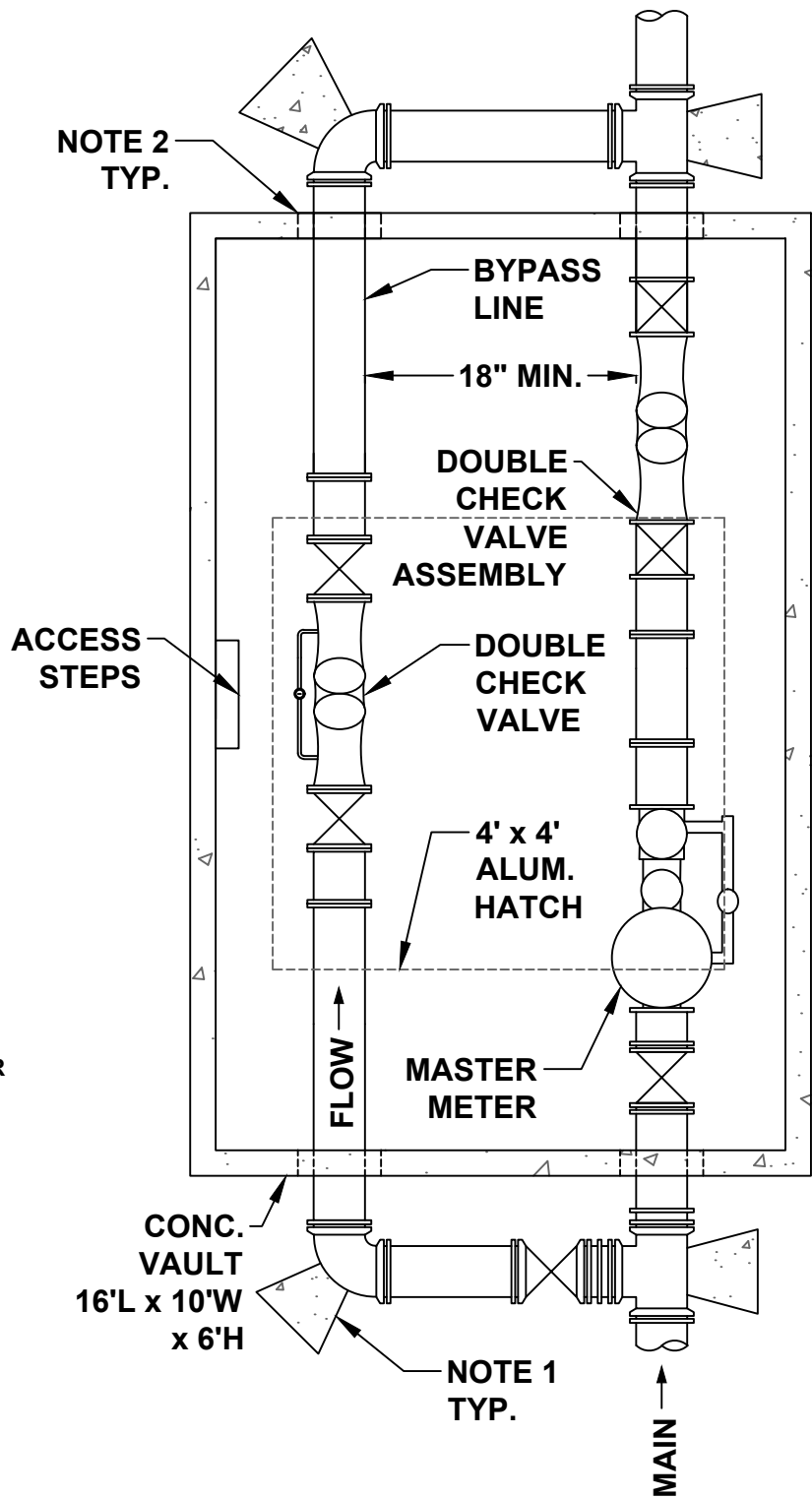


GENERAL NOTES

1. ALL BURIED BENDS AND TEES SHALL BE MJ MEGA-LUG GLANDS AND HAVE RESTRAINT THRUST BLOCKING IN ACCORDANCE WITH THE STANDARD DETAILS.
2. "ROMA GRIP" RESTRAINED MJ/FLANGED COUPLING ADAPTERS SHALL BE USED FOR TRANSITION INTO THE VAULT.
3. ALL INTERIOR VAULT FITTINGS SHALL BE FLANGED.
4. GATE VALVES SHALL BE RISING STEM OS & Y TYPE
5. "CONBRACO" OR "WATTS" DOUBLE CHECK VALVE SHALL INCLUDE 3/4 INCH BYPASS METER AND CHECK VALVE ASSEMBLY.
6. COMPOUND METER WITH DUAL PORT R900V2 TRANSMITTER KIT SHALL BE AS MANUFACTURED BY NEPTUNE (HP PROTECTUS III).
7. WHEN NO FIRE VAULT IS REQUIRED, COMPOUND METER SHALL BE NEPTUNE (HP PROTECTUS III).
8. ACCESS HATCH SHALL BE BILCO ALUMINUM SINGLE SWING AND LOCATED FOR OPTIMUM MAINTENANCE ACCESS.
9. PRECAST CONCRETE VAULT 5 INCH MIN. WALL THICKNESS.
10. VAULTS SHALL BE OPTIMALLY LOCATED WITHIN LANDSCAPED AREAS AND 3-5 FT. CLEAR OF ANY PLANTINGS OR MATURE TREE ROOTS.
11. FINISH GRADE INSIDE VAULT SHALL BE OPEN. MIN. 6 INCH #57 STONE AND 2 FT. MIN. CLEARANCE FROM FINISH FLOOR TO BOTTOM OF FLANGES.

3-6 INCH MAIN ONLY

12. ACCESS HATCH SHALL BE BILCO ALUMINUM 3' X 3' SINGLE SWING AND LOCATED FOR OPTIMUM MAINTENANCE ACCESS.
13. COMPOUND METER SHALL BE AS MANUFACTURED BY NEPTUNE (TRU/FLO). FOR 6 INCH MAINS, CONFIRM TYPE WITH CITY BASED ON DESIGN FLOW RATES.



LATEST REVISION

07/14/2017

CITY OF CUMMING

DEPARTMENT OF UTILITIES

MASTER METER WITH BYPASS DETAIL

6" AND 8" MAIN

DETAIL NUMBER:

W-34

SCALE: NOT TO SCALE