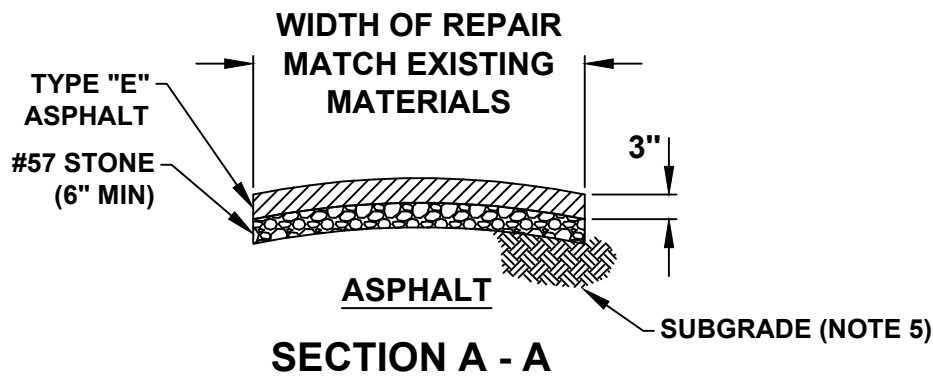
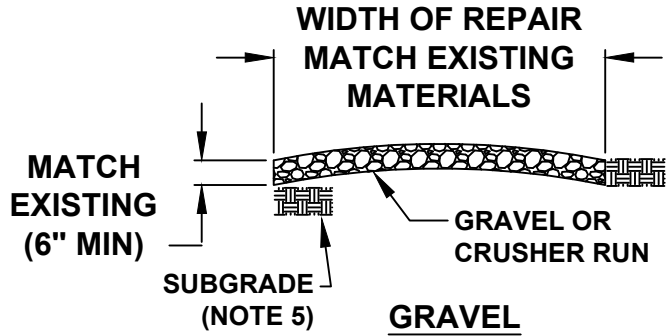
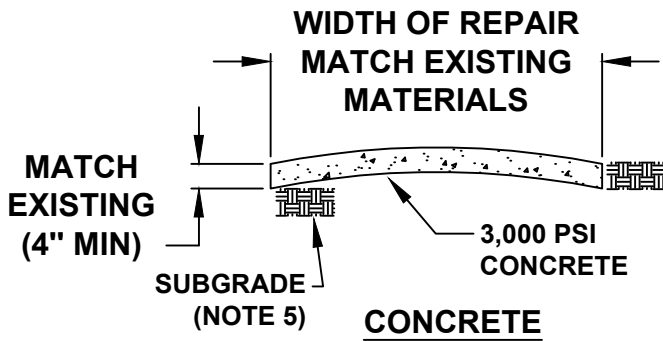
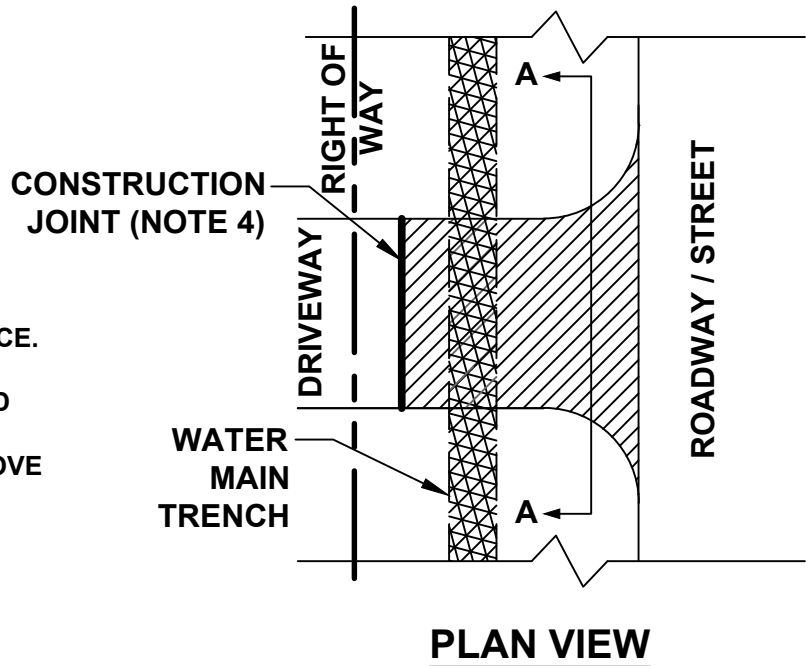


NOTES:

1. FREE-BORE CROSSINGS ARE STANDARD UNLESS SHOWN OTHERWISE IN CONTRACT DRAWINGS OR APPROVAL IS GIVEN BY THE CITY.
2. FINISHED GRADE TO BE FLUSH WITH EDGE OF DRIVE.
3. FINISHED SURFACE OF REPAIRED AREA TO MATCH EXISTING SURFACE. SAW CUTS SHALL BE VERTICAL. EXPANSION MATERIAL TO BE USED AS DIRECTED.
4. FOR CONCRETE DRIVEWAYS REMOVE & REPLACE BACK TO FIRST CONSTRUCTION JOINT.
5. SUBGRADE COMPACTION AND MATERIALS SHALL MEET SPECIFICATIONS AND TRENCHING STANDARD DETAILS.



CITY OF CUMMING

DEPARTMENT OF UTILITIES

DRIVEWAY CUT REPAIRS

DETAIL NUMBER:

W-27

LATEST REVISION

07/14/2017

SCALE: NOT TO SCALE