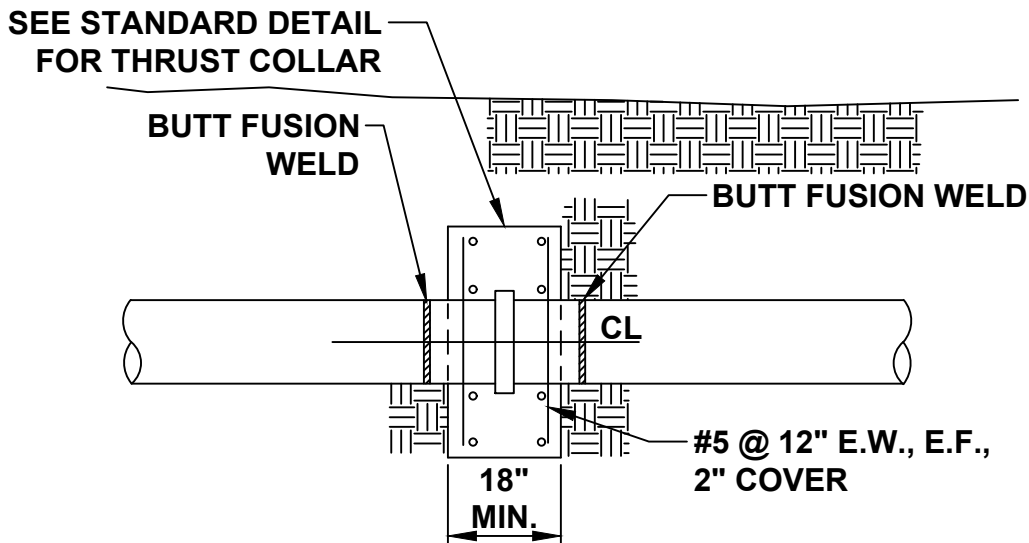


(INCLUDING FUSION WELDS AND MEGALUG) STAINLESS STEEL RING INSERT IS REQUIRED FOR HDPE MJ ADAPTER

PLAN



CONCRETE SHALL BE 3000 PSI REINFORCED
STEEL SHALL MEET ASTM A615, GRADE 60

SECTION A-A



LATEST REVISION

07/14/2017

CITY OF CUMMING

DEPARTMENT OF UTILITIES

LINE TRANSITION DETAIL

DETAIL NUMBER:

S-30

SCALE: NOT TO SCALE