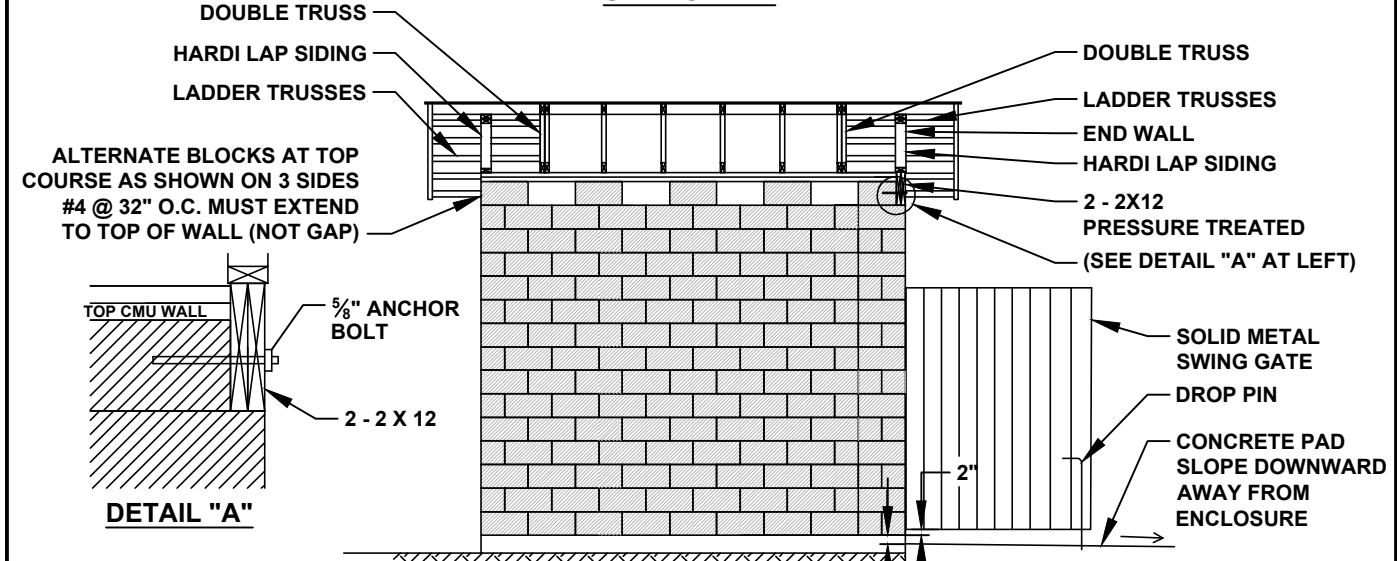


**DUMPSTER ENCLOSURE
SECTION A-A**



DETAIL "A"

PAINT: INSIDE AND OUTSIDE
TO MATCH SURROUNDING
BUILDINGS. PAINT TO BE
APPROVED BY CITY.

**CUMMING
UTILITIES**

LATEST REVISION

07/14/2017

CITY OF CUMMING

DEPARTMENT OF UTILITIES

**DUMPSTER ENCLOSURE
DETAILS**

DETAIL NUMBER:

S-28B

SCALE: NOT TO SCALE