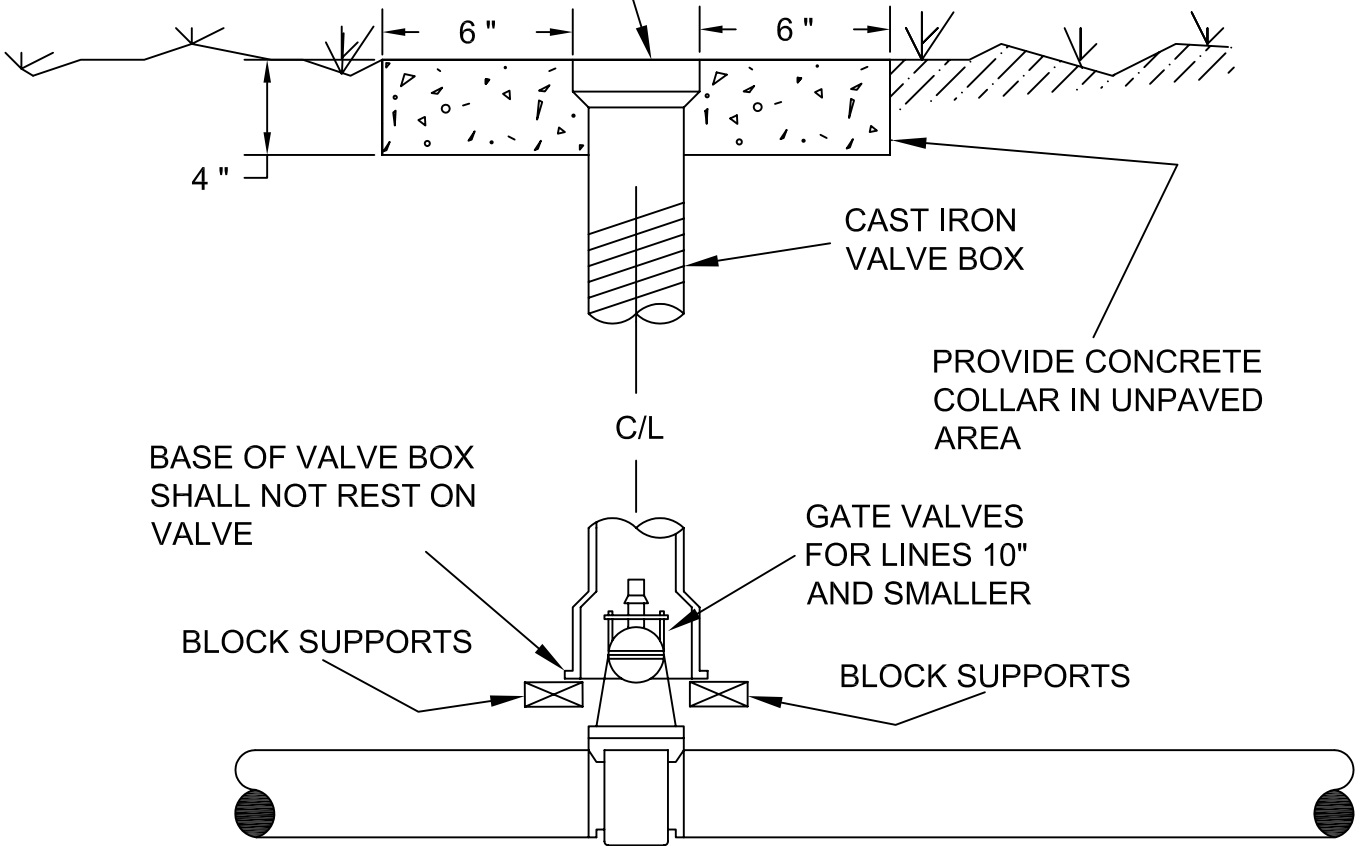


CAST IRON COVER WITH  
"WATER" CAST ON TOP



CAST IRON  
VALVE BOX

PROVIDE CONCRETE  
COLLAR IN UNPAVED  
AREA

BASE OF VALVE BOX  
SHALL NOT REST ON  
VALVE

GATE VALVES  
FOR LINES 10"  
AND SMALLER

BLOCK SUPPORTS

BLOCK SUPPORTS

C/L

REVISIONS


# City of Cumming

Department of Utilities - Distribution and Collection Division

## TYPICAL GATE VALVE INSTALLATION DETAILS



W-6