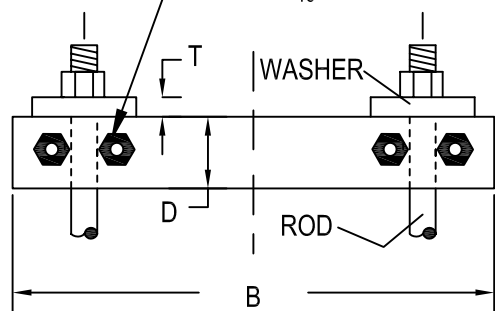
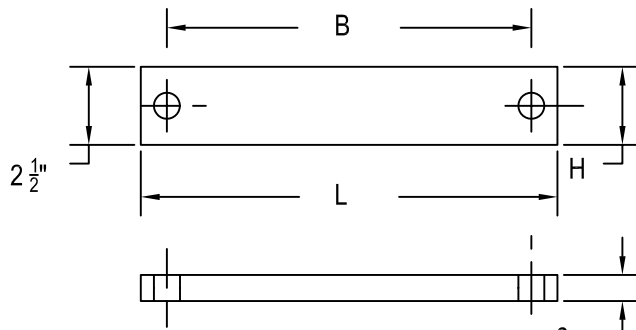


TEE ANCHOR STRAP AT PLUG

BOLT HOLE SHALL BE $\frac{1}{16}$ " LARGER THAN BOLTS



TYPICAL JOINT STRAP & ROD ARRANGEMENT



PLUG ANCHOR STRAP

$\frac{3}{4}$ "

STEEL SOCKET CLAMP DIMENSIONS (INCHES)							
SIZE	A	B	C	D	E	T	ROD & C WASH SIZE
4	5	14 5/8	1/2	2	5/8 X 3 1/2	5/8	3/4
6	7 1/8	16 7/8	1/2	2	5/8 X 3 1/2	5/8	3/4
8	9 5/16	19 1/8	5/8	2 1/2	5/8 X 3 3/4	5/8	3/4
10	11 1/2	21 3/8	5/8	2 1/2	3/4 X 3 3/4	3/4	3/4
12	13 1/2	25 1/8	5/8	3	7/8 X 4 1/2	3/4	3/4
14	15 1/2	28 1/4	3/4	3	7/8 X 4 1/2	7/8	3/4
16	17 7/8	31 3/8	3/4	4	1 X 4 1/2	7/8	3/4
20	22 1/8	37 3/4	3/4	4 1/2	1 1/4 X 3	1 1/8	3/4
24	26 3/8	44 1/4	3/4	5	1 1/2 X 5 1/2	1 1/4	3/4

ABOVE ANCHOR STRAP DIMENSIONS (INCHES)						
SIZE	B	G	H	L	R	S
4	10 1/8	5/8 X 2 1/2	13/16	12 1/2	2 1/2	3/4
6	12 1/8	5/8 X 2 1/2	13/16	14 1/2	3 9/16	3/4
8	14 3/8	5/8 X 2 1/2	13/16	16 3/4	4 21/32	3/4
10	16 11/16	5/8 X 2 1/2	1 1/16	19 1/16	5 3/4	3/4
12	19 3/16	5/8 X 3	1 1/16	22 5/16	6 3/4	7/8

NOTES:

1. INSTALLATION OF, AND MATERIALS FOR RODS, CLAMPS, STRAPS, BOLTS, AND WASHERS SHALL CONFORM TO THE NATIONAL FIRE CODES - NFFA NO. 24 LATEST REVISION.
2. YOKES AND ANCHOR STRAPS FOR FITTINGS LARGER THAN 12" SHALL BE DESIGNED AND APPROVED FOR SPECIFIC INSTALLATION.
3. RODS TO BE HIGH TENSILE, HOT ROLLED STEEL WITH TENSILE STRENGTH OF 110,000 PSI AND A MINIMUM OF 95,000 YIELD STRENGTH.
4. NUTS TO HAVE HEAVY DUTY SEMI-FINISH WITH NATIONAL COURSE THREADS.
5. AFTER INSTALLATION TIE RODS AND CLAMP ASSEMBLY SHALL BE THOROUGHLY COVERED WITH ROYSTON LABORATOIES, INC. ROSKOTE MASTIC NO A939 OR KOPPERS CO, INC BITUMASTIC SUPERSERVICE BLACK OR APPROVED EQUIVALENT.

REVISIONS

City of Cumming
 Department of Utilities - Distribution and Collection Division



**TRHUST RESTRAINT:
 STRAP AND ROD DETAILS**

W-36