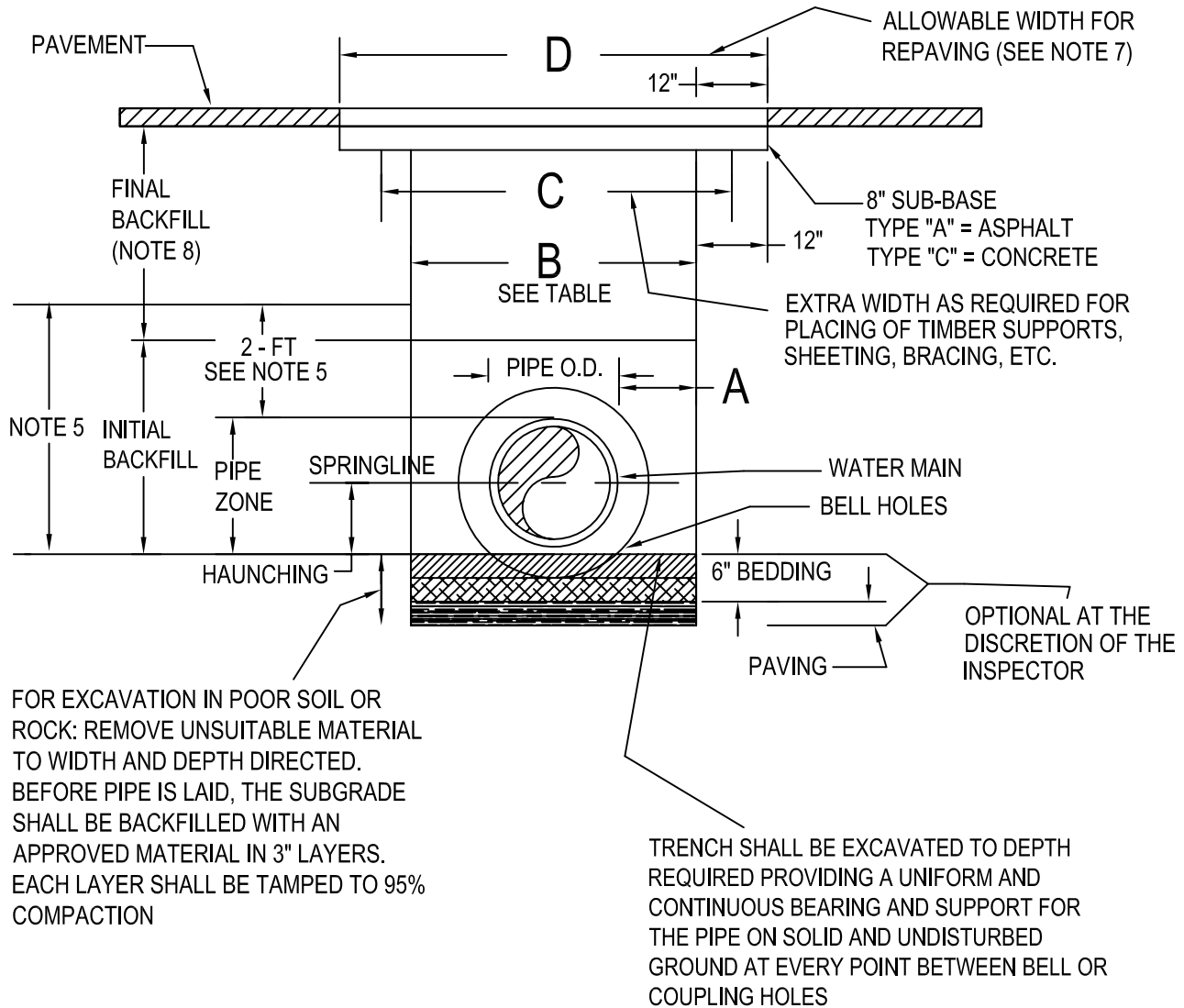


NO PAVEMENT CUTS PERMITTED WITHOUT APPROVAL OF INSPECTOR AND WRITTEN PERMISSION FROM AUTHORITY HAVING JURISDICTION (SEE DETAIL W-46 FOR PAVEMENT CUT REPAIRS).



REVISIONS

City of Cumming
 Department of Utilities - Distribution and Collection Division

ALLOWABLE TRENCH WIDTHS 3/4-INCH TO 2-INCH SERVICE LINES AND 2-INCH AND LARGER WATER MAINS

W-11 B