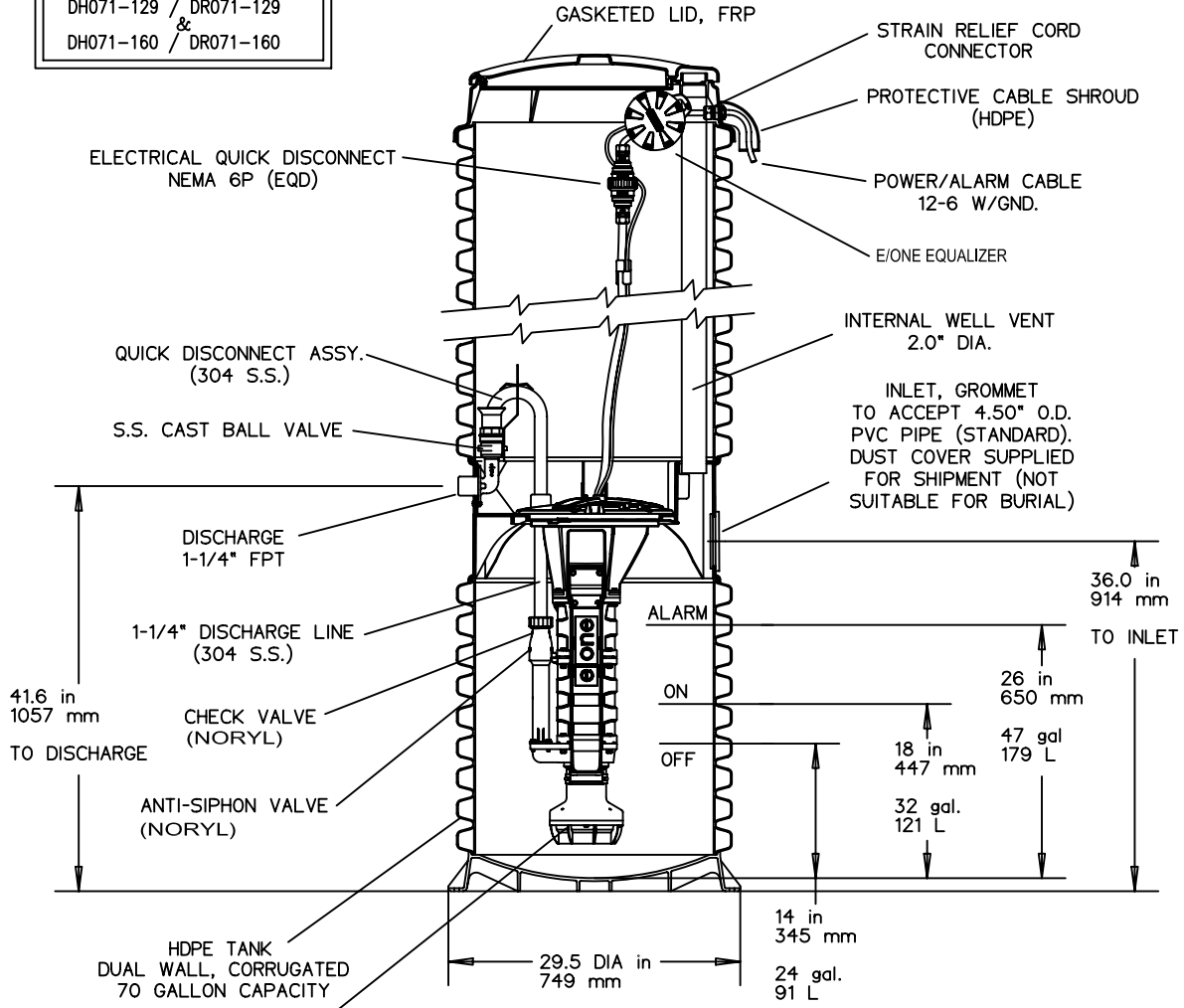


FIELD JOINT REQUIRED FOR MODELS
DH071-129 / DR071-129
&
DH071-160 / DR071-160

OPTIONS: DH071 (HARD WIRED LEVEL CONTROLS)
 DR071 (WIRELESS LEVEL CONTROLS)



SEMI-POSITIVE DISPLACEMENT TYPE PUMP. EACH DIRECTLY DRIVEN BY A 1 HP MOTOR



AD	CH	07/12/07	A	
DR BY	CHK'D	DATE	ISSUE	SCALE

CONCRETE BALLAST MAY BE REQUIRED
SEE INSTALLATION INSTRUCTIONS
FOR DETAILS

eone
SEWER SYSTEMS
MODEL DH071 / DR071
DETAIL SHEET
NA0050P02

REVISIONS

City of Cumming
Department of Utilities - Distribution and Collection Division

TYPICAL GRINDER PUMP DETAIL

S-26